



Pollack Architecture

project Recology, San Francisco.

standout An art installation made from old skateboard decks enlivens a recycling-services office where efficient lighting and refurbished furniture contribute to a LEED Gold rating.

Chada and Circa Architecture



project Saffire Freycinet, Coles Bay, Australia.

standout This 20-key luxury resort's organic forms and plentiful use of stone and timber harmonize with the protected coastal landscape of the surrounding national park.

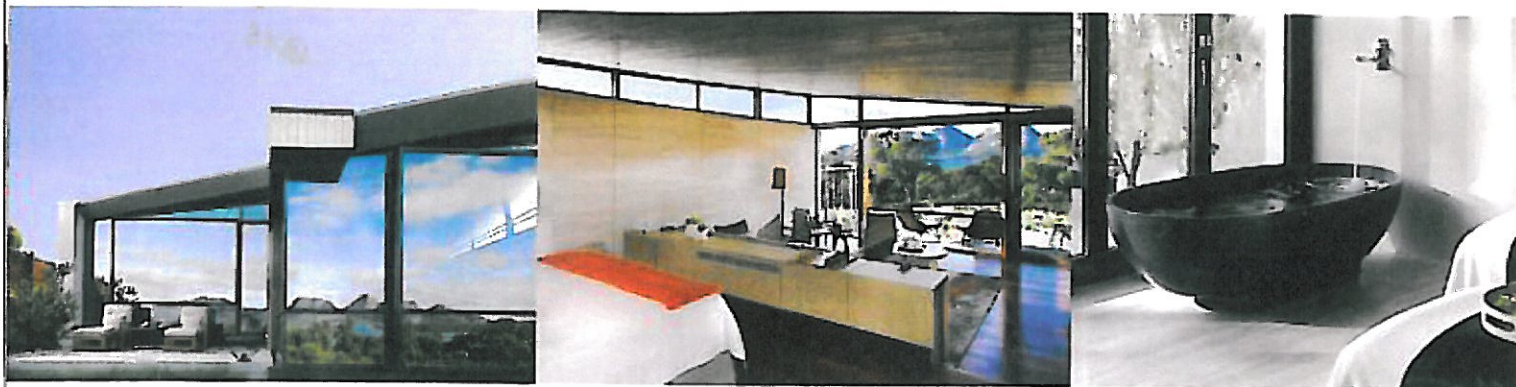


Minarc

project House, Los Angeles.

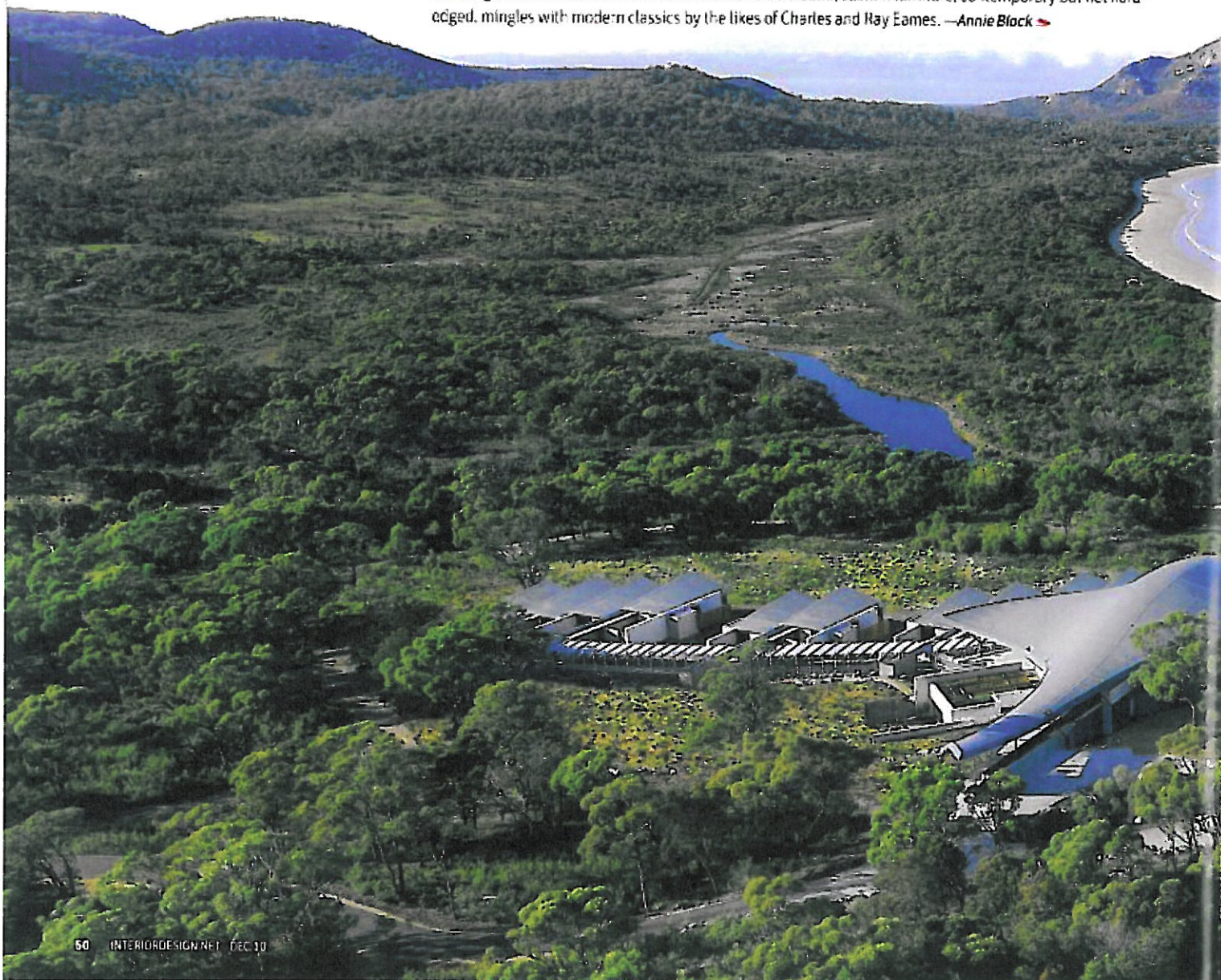
standout Instead of falling victim to the wrecking ball, more than half of a five-unit apartment building was preserved in converting it into a 3,850-square-foot single-family house.

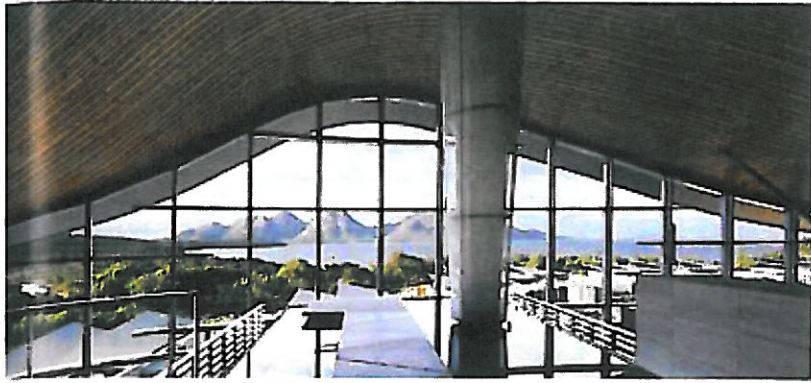




CHADA AND CIRCA ARCHITECTURE SAFFIRE FREYCINET, COLES BAY, AUSTRALIA

Next to a protected national park on the Freycinet Peninsula in Tasmania, this property hugs a gentle curve of sandy shoreline near where migrating whales and dolphins come to play. The luxury retreat's eco-minded buildings, designed by Circa Architecture director Peter Walker, and interiors, the work of Chada creative director Juliet Ashworth, take inspiration from the surroundings: the rippling sapphire-blue water, the flowing white dunes, the gray-green of the bushland, the pink granite mountain peaks. Particularly organic is the main pavilion's roofline, its undulating ribbed form made from local timber, while the slanted roofs of the 20 free-standing suites combine to create a wave. Inside each suite, custom furniture, contemporary but not hard-edged, mingles with modern classics by the likes of Charles and Ray Eames. —Annie Black ➤





MICHAEL WATSON, KRISTI WAYMAN (PROJECT TEAM, JTHWA); POPPY TAYLOR, JARRGO HUGHES, ROBERT MORRIS NUNN, GANCHE CHAU, CHRIS ROBERTS, GARY FLEMING, TINA CURTIS, JUDI DAVIS (PROJECT TEAM, JTHWA ARCHITECTURE).

