

100+ AWARD WINNERS ASTON MARTIN * AUDI
BRIONI * FERRARI * GULFSTREAM * RALPH LAUREN & MORE



Robb Report

Special Issue

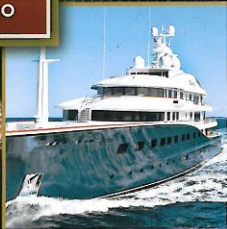
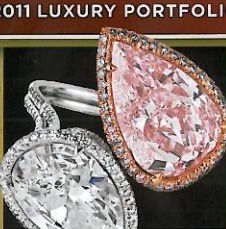
RobbReport.com



23RD ANNUAL

BEST OF THE BEST

2011 LUXURY PORTFOLIO



BEST of the BEST JOURNEYS

2011



SELECTION GUIDELINES

Resorts 104

Hotels 112

Spas 122

Golf Courses 126

- Resorts, hotels, spas, and golf courses must have opened, or reopened after extensive renovations, since January 2010.
- Properties selected in the resorts and hotels categories were not eligible for consideration in the spas category.

Vacation Homes 130

- Destination clubs, private residence clubs, private resort communities, and resort residences were evaluated based on the quality of their existing facilities, services, and amenities as of January 2011.





Saffire Freycinet

TASMANIA HAS long attracted tourists who come to explore the island's great outdoors. With the opening last June of **Saffire Freycinet** (+61.3.6256.7888, www.saffire-freycinet.com.au), travelers to this Australian wonderland can now find great indoors to match.

Built within Freycinet National Park on Tasmania's east coast, the \$32 million resort encompasses a giant manta ray-shaped main lodge and 20 modern suites. Floor-to-ceiling windows open the suites to views of the Hazards mountain range, located just across Great Oyster Bay. The main lodge also looks out to the bay and mountains, a vista best enjoyed at sunset—when the Hazards are ablaze in brilliant shades of orange and red—over cocktails in the resort's midcentury modern lounge.

Saffire Freycinet's lodge also houses a spa and a restaurant that showcases local meats and produce. Visitors can gather their own ingredients on guided visits to the resort's on-property oyster farm. Other activities include walks at twilight to observe kangaroos and other local wildlife, and sailing trips around the park's Schouten Island to view droves of seals and sea lions, and, occasionally, great white sharks. (\$1,526–\$2,602)

—KRISTIN LUNA

Great Britain does not suffer from a shortage of elegant country house hotels. Even so, **Coworth Park** (+44.1344.876.600, www.coworthpark.com), from the London-based Dorchester Collection, is a welcome addition to the English countryside, representing a fresh take on the classical country inn.

Opened last September on 240 acres of storied Berkshire parkland—formally the estate of the 17th Earl of Derby—the equine-centric retreat has a casual, contemporary style inspired by the surrounding polo fields, woods, and lily ponds. Decor in the 70 guest rooms and suites—spread among the earl's renovated Georgian mansion

and former stables, and a collection of cottages—spans the range from four-poster beds styled after tree branches to large close-up photographs of horses' noses, necks, and other body parts. Not to be outdone, the resort's main bar displays portraits of horses sporting salon-coiffed hairstyles.

Stables at the estate's entrance are home to Coworth Park's real-life horses and the equestrian center, where guests of any riding level can receive one-on-one instruction. Two restaurants, one more formal than the other but both helmed by Michelin-starred chef John Campbell, serve seasonal fare, while a partially underground eco-luxe spa offers treatments incorporating herbs grown on its roof. (\$388–\$5,779)

—FARHAD HEYDARI

*

Set against the fairy-tale backdrop of Lake Como, **Castadiva Resort** (+39.031.32.511, www.castadivaresort.com) in Blevio, Italy, evokes the spirit of its former resident, Giuditta Pasta—the 19th-century opera diva who served as composer Vincenzo Bellini's muse.

The resort, which opened last June, encompasses 75 suites and rooms contained in nine distinctive villas (each named for a female opera character). At the far end of the property, the three-bedroom neoclassical Villa Norma (referencing Pasta's most famous role) combines the service of a hotel with residential-style privacy



Coworth Park